



Example Air Force Base, USA

Overall Percentile

73rd Percentile

Percentile Rank across all 157 U.S. Air Force Installations



Criteria

Percentile

	Rate/Ratio	Average*	Percentile**	
Academic Performance (60%)	Graduation Rate	92%	80 th	65 th
	Student's Average Annual Learning Rate	0	50 th	
School Climate (20%)	Chronic Absenteeism Rate	3%	90 th	75 th
	Suspension Rate	2%	85 th	
Service Offering (20%)	Student to Teacher Ratio	15 : 1	70 th	45 th
	Student to Counselor Ratio	478 : 1	30 th	
	Student to Mental Health Prof. Ratio	593 : 1	55 th	
	Student to Nurse Ratio	570 : 1	75 th	
	Pre-Kindergarten Score	44***	30 th	

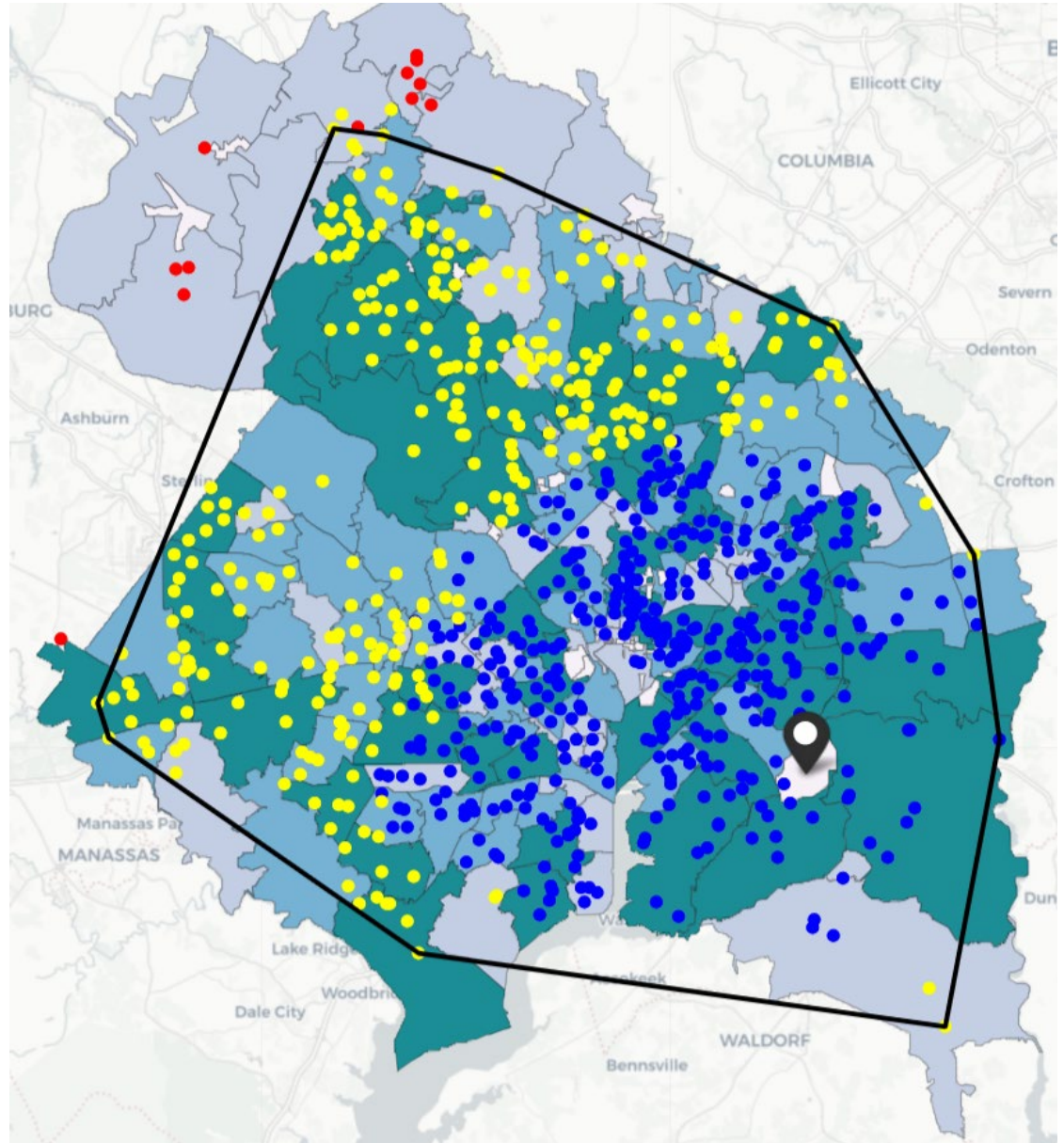
* Average -- the installation average value of each criteria, weighted by enrollment

** Percentile – where each Installation Average sits in relation to all other Air Force installations

*** Pre-Kindergarten Score – a score from 0 to 100 representing an installation's Pre-Kindergarten availability. For more information on the calculation of this score, please see the underlying documentation.



Example Air Force Base, USA



Legend*

- Installation
- School within a 30-minute drive of the installation
- School between a 30-minute and 60-minute drive of the installation
- School over a 60-minute drive to the installation
- One-hour drive border (approx.)

* Map boundaries represent zip codes within the Military Housing Area (MHA) of this installation.

Least populous Most populous

Data Sources

Data Source	Criteria	Reference
Stanford Education Data Archive (SEDA)	Student's Average Annual Learning Rate	https://edopportunity.org/methods/
US Department of Education – ED Data Express	Chronic Absenteeism Rate, Graduation Rate	https://eddataexpress.ed.gov/download
US Department of Education – Civil Rights Data Collection	Suspension Rate, Student to Teacher Ratio, Student to Counselor Ratio, Student to Mental Health Prof. Ratio, Student to Nurse Ratio, Pre-Kindergarten Score	https://ocrdata.ed.gov/