

DAFI 36-2903 REWRITE

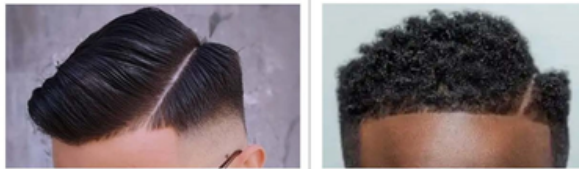
OVERALL CHANGES:

- **Enhanced visuals:** New graphics clarify standards and complement text
- **Improved navigation:** Streamlined structure for easier use
- **Clearer language:** Consistent and unambiguous wording for better understanding
- **DAFGM updates:** Uniform board changes seamlessly integrated

DRESS & APPEARANCE:

- Clarifies duty badge guidance; wear and placement of up to 3 duty badges on male and female service, semi-formal, formal and mess dress uniforms
- Authorizes commercial maternity cold weather gear
- Delegates wing commander approval of religious regalia wear during events
- Authorizes permanent wear of EPME badge
- Authorizes female wear of mess dress trousers/slacks
- Clarifies language for graduate patch wear for certain schools and courses

Figure 3.5 Cut, Clipped or Shaved Part



Part will not exceed 4 Inches In length or 1/4 Inch In width

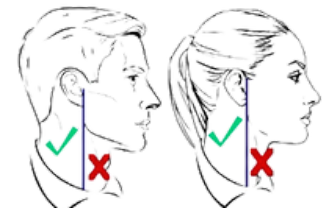


Figure 3.16 Neck Tattoo Approved Location

Figure 3.12 Ponytail/Braid Length



Hair may not extend below line running between the top of each sleeve Inseam at the under arm through blade

Figure 3.13 Unauthorized Ponytails



Figure 3.1 Male - Unauthorized Hair Examples

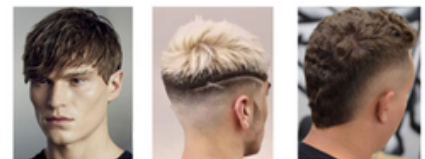


Figure 3.1 Female - Unauthorized Hair Examples

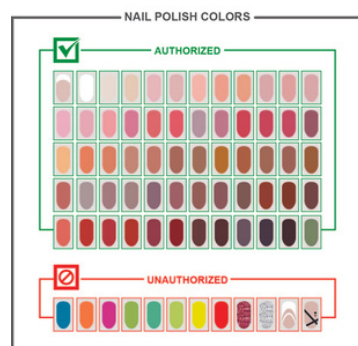
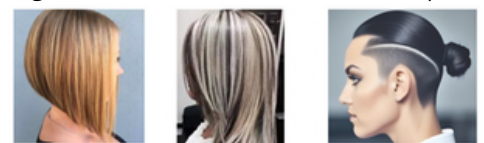


Figure 3.14 Authorized & Unauthorized Nail Polish Color (Not All-Inclusive)

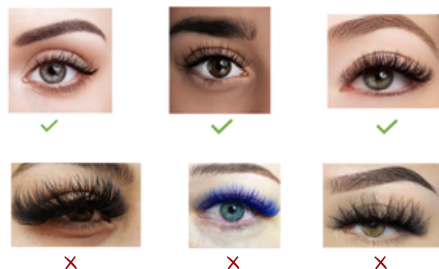


Figure 3.15 Authorized & Unauthorized Eyelash Extension Examples